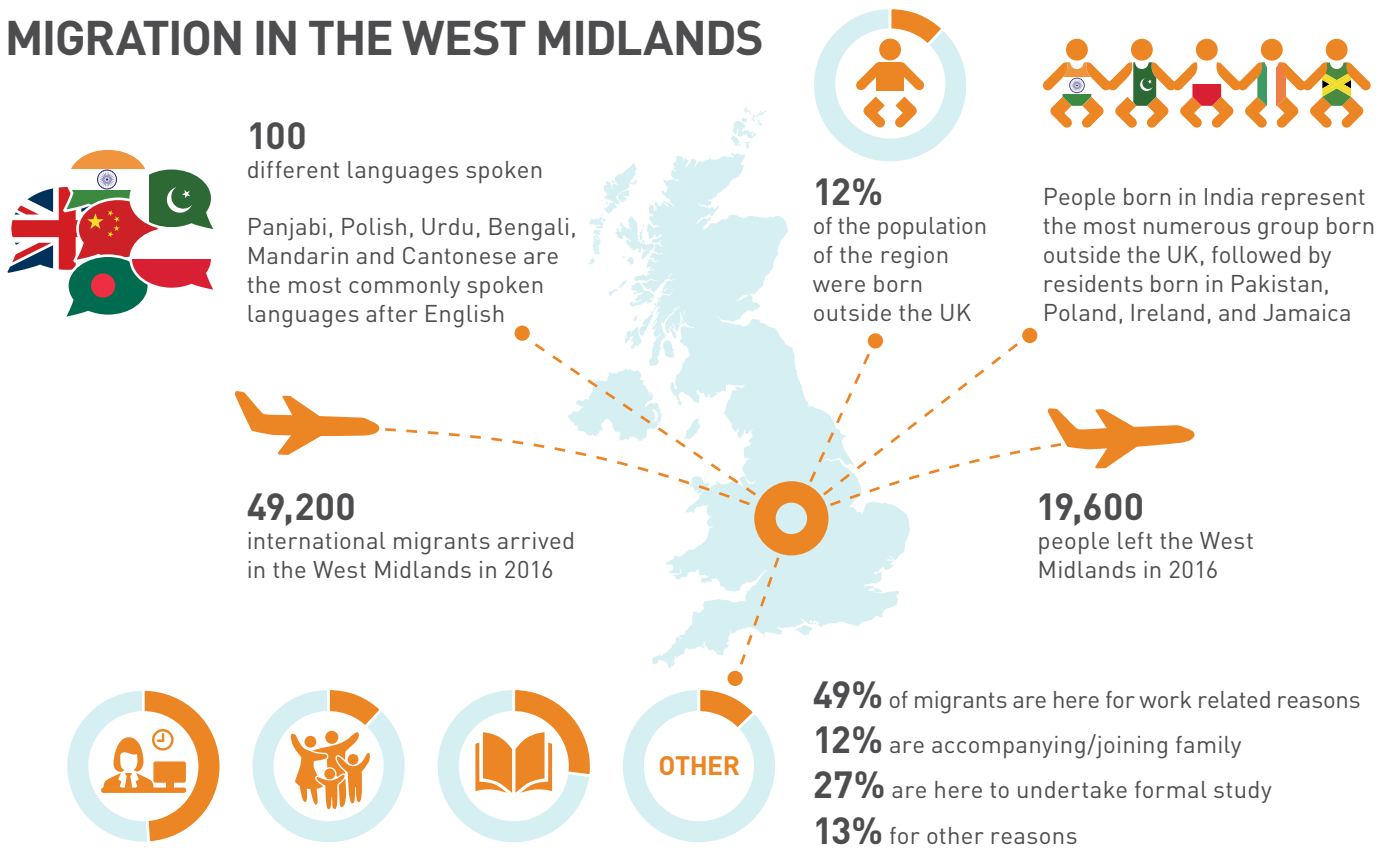


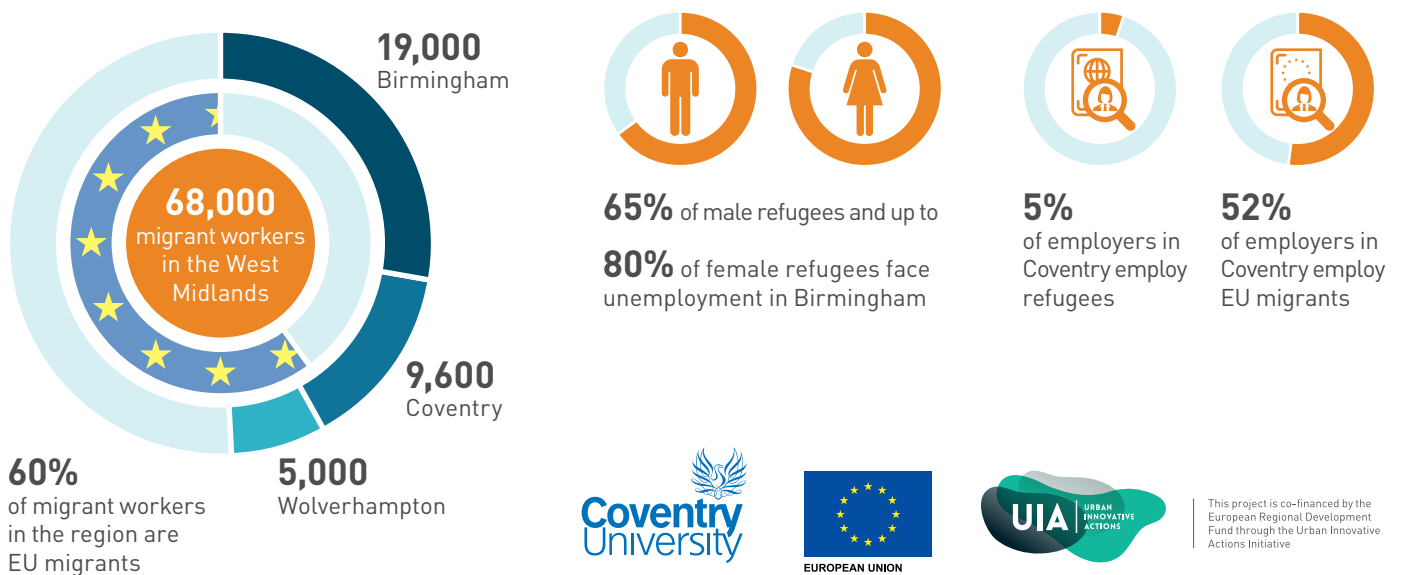
How MiFriendly is the West Midlands?

MiFriendly Cities is a 3-year initiative that will look to develop innovative, community-led and sustainable approaches to enhancing the contribution of refugees and migrants across the West Midlands region.

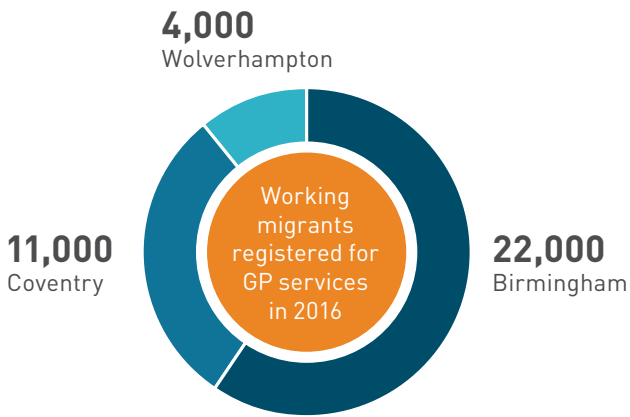
MIGRATION IN THE WEST MIDLANDS



EMPLOYMENT



HEALTH



4.5% of migrants to the West Midlands day to day activities are limited a little by long-term health or disabilities



4.2% across England as a whole

SOCIAL COHESION



55% of people in the West Midlands are most likely to meet someone from a migrant background in their neighbourhood



62% of people in the West Midlands agree that migrants enrich the region's cultural life



57% of people in the West Midlands agree that public services in the UK could not survive without migrant workers



70% of people in the West Midlands would not challenge someone else's prejudice towards migrants, refugees and asylum seekers



36% of people in the West Midlands believe that migrants and refugees are discriminated against in the UK



61% of people in the West Midlands who have been discriminated against say it was because of race

ACTIVE CITIZENSHIP



70% of people in the West Midlands agree that EU migrants should be allowed to remain in the UK after Brexit



92% of people in the West Midlands agree that asylum seekers should be allowed to work



37% of people in the West Midlands believe that non-UK born people should not have the same rights as UK born people



82% of people in the West Midlands expect to be treated more positively than refugees and asylum seekers

11 partners, 3 cities, 1 initiative. Our innovative partnership of public, private and voluntary sector organisations will establish in the West Midlands a unique network of skills and knowledge. If you would like to learn more about the project or find out how you can get involved, you can visit our website at www.MiFriendlyCities.co.uk or email MiFriendlyCities@coventry.gov.uk

DATA SOURCES:

How MiFriendly is the West Midlands?

MIGRATION IN THE WEST MIDLANDS

- 49,200 international migrants arrived in the West Midlands in 2016. (ONS Local Migration Indicators 2017)
- 19,600 people left the West Midlands in 2016. (ONS Local Migration Indicators 2017)
- 12% of the population the region were born outside the UK. (ONS Annual Population Survey 2017)
- 49% of migrants are here for work related reasons, 12% are accompanying/joining family, 27% are here to undertake formal study and 13% for other reasons. (WMSMP Migration Report 2017)
- People born in India represent the most numerous group born outside the UK, followed by residents born in Pakistan, Poland, Ireland, and Jamaica.
(<https://migrationobservatory.ox.ac.uk/resources/briefings/west-midlands-census-profile/>)
- 100 different languages spoken. (Birmingham Community Safety Partnership 2013)
- Panjabi, Polish, and Urdu, Bengali, Mandarin and Cantonese are the most commonly spoken languages after English.
(<https://migrationobservatory.ox.ac.uk/resources/briefings/west-midlands-census-profile/>)

EMPLOYMENT

- 68,000 migrant workers in the West Midlands. (ONS Local Migration Indicators 2017)
Birmingham 19,000, Coventry 9,600, Wolverhampton 5,000. (ONS Local Migration Indicators 2017)
- 60% of migrant workers in the region are EU migrants. (ONS Local Migration Indicators 2017)
- 65% of male refugees and up to 80% of female refugees face unemployment in Birmingham.
(<https://rise-project.eu/ie/analysis/>)
- 5% of employers in Coventry employ refugees. (MiFriendly Cities Research Briefing No. 2 Results from Survey of Employers in the West Midlands, Coventry University on behalf of MiFriendly Cities)
(https://mifriendlycities.co.uk/wp-content/uploads/2019/03/Employers-Survey_CU_Final_Web_reduce.pdf)
- 52% of employers in Coventry employ EU migrants. (MiFriendly Cities Research Briefing No. 2 Results from Survey of Employers in the West Midlands, Coventry University on behalf of MiFriendly Cities)
(https://mifriendlycities.co.uk/wp-content/uploads/2019/03/Employers-Survey_CU_Final_Web_reduce.pdf)

HEALTH

- Birmingham 22,000 working migrants registered for GP services in 2016, 11,00 in Coventry, 4,000 in Wolverhampton. (ONS Local Migration Indicators 2017)
- 4.5% of migrants to the West Midlands day to day activities are limited a little by long term health or disabilities.
- 4.2% across England as a whole. (Public Health England: Migrant Health in the West Midlands, 2017).

SOCIAL COHESION

(MiFriendly Cities Research Briefing No. 2 Results from Survey of Residents in the West Midlands, Coventry University on behalf of MiFriendly Cities)

- 55% of people were most likely to meet someone from a migrant background in their neighbourhood.
- 62% of people in the West Midlands agree that migrants enrich the region's cultural life.
- 57% of people agreed that public services in the UK could not survive without migrant workers.
- 70% of people would not challenge someone else's prejudice towards migrants refugees and asylum seekers.
- 36% of people believe that migrants and refugees are discriminated against in the UK.
- 61% of people who had been discriminated against said it was because of race.

ACTIVE CITIZENSHIP

(MiFriendly Cities Research Briefing No. 2 Results from Survey of Residents in the West Midlands, Coventry University on behalf of MiFriendly Cities)

- 70% of people agreed that EU migrants should be allowed to remain in the UK after Brexit.
- 92% of people in the West Midlands agree that asylum seekers should be allowed to work.
- 37% of people in the West Midlands believe that non UK born people should not have the same rights as UK born people.
- 82% of people said they expected to be treated more positively than refugees and asylum seekers.